



Aridus Rapid Drying Concrete, a proprietary concrete mix, reduces drying time and risks associated with excess moisture to enable faster, safer flooring installation.

The effects of unacceptably high moisture levels within a concrete slab are a leading cause of flooring problems. Aridus Rapid Drying Concrete eliminates a major source of moisture-related flooring problems and increases the likelihood that installations will proceed on schedule — without the need for costly topical moisture mitigation treatments.

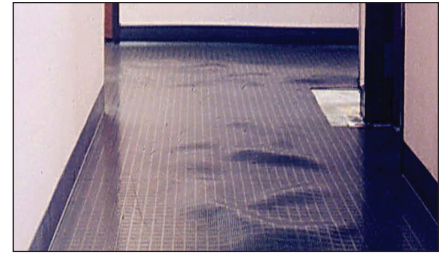
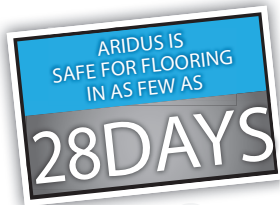


PHOTO COURTESY OF PETER CRAIG.

ARIDUS IS IDEAL FOR: SCHOOLS, HOSPITALS, DATA CENTERS, RETAIL, OFFICES, HOME ADDITIONS AND MORE

The Safer Choice

Excess moisture in a concrete slab is a leading cause of flooring problems. Preventing moisture problems in situations where moisture-sensitive floor coverings will be applied is critical.



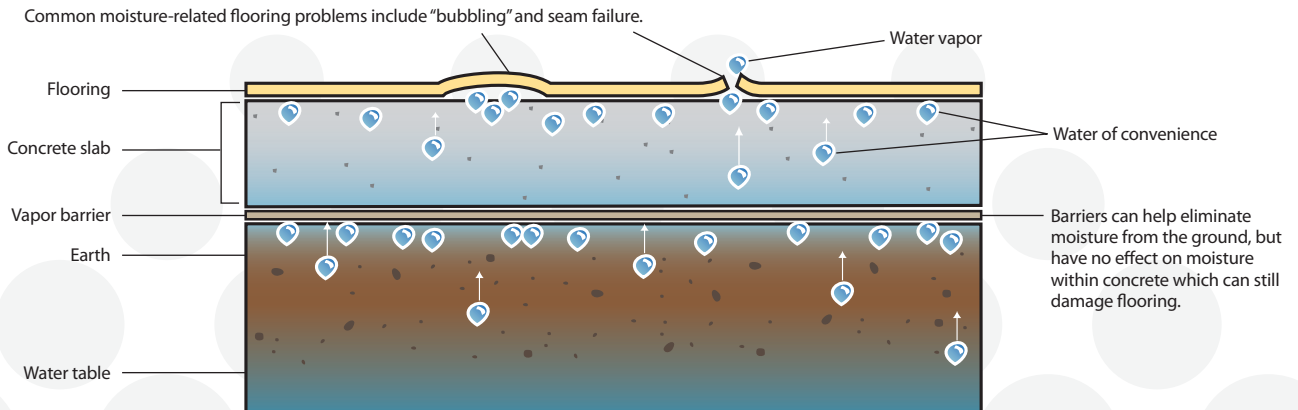
Aridus Rapid Drying Concrete helps prevent moisture problems by:

- Accelerating drying time more than conventional concrete mixes
- Resisting rewetting during and after construction

Fights Moisture-Related Flooring Failure

Aridus Rapid Drying Concrete helps reduce the risk of:

- Costly floor damage, repairs, replacements and moisture mitigation treatments
- Construction delays and cost overruns
- Concrete moisture levels not meeting flooring industry warranty standards
- Alkali and pH issues
- Mold and mildew damage
- Sick building syndrome and air quality issues
- Liabilities associated with flooring failure



www.us-concrete.com/aridus



ARIDUS RAPID DRYING CONCRETE IS A PROPRIETARY PRODUCT OF USC TECHNOLOGIES, INC., A U.S. CONCRETE COMPANY

For more information, call 1-866-882-6176



Aridus Rapid Drying Concrete, a proprietary concrete mix, reduces drying time and risks associated with excess moisture to enable faster, safer flooring installation.

OVERVIEW OF MOISTURE PROBLEMS

The effects of an unacceptably high level of moisture in concrete are a leading cause of flooring failures. Aridus Rapid Drying Concrete eliminates a major source of moisture-related flooring problems and reduces the risk of:

- Delayed projects
- Lost productivity
- Alkali and pH issues
- Mold problems
- Sick building syndrome
- Costly business interruptions, floor damage, moisture mitigation treatments, repairs and replacements
- Voided floor warranties

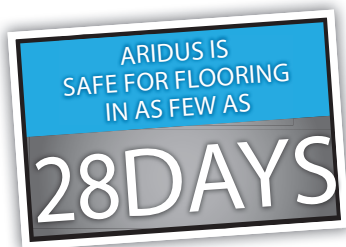
Preventing moisture problems is essential. Concrete needs to meet flooring industry warranty standards despite tight time frames and external factors.



Applications

Recommended for use in:

- Schools, hospitals, data centers, retail, offices and home additions
- Very wet and very dry climates
- Slabs close to the water table
- Projects that need an extra margin of safety



Benefits

- Helps keep critical projects on schedule
- Reduces flooring moisture damage risk
- Dries faster than conventional concrete

www.us-concrete.com/aridus



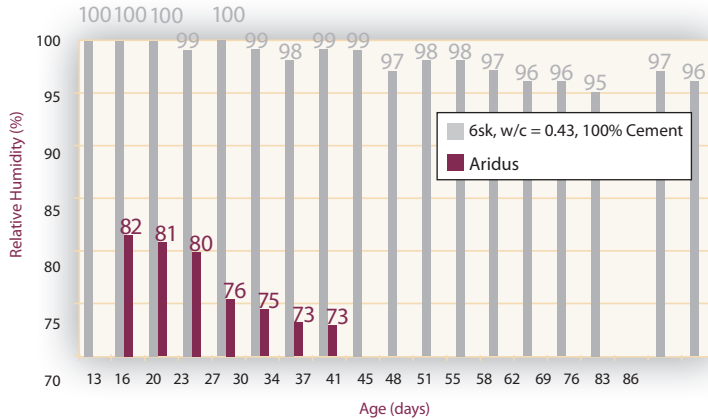
ARIDUS RAPID DRYING CONCRETE IS A PROPRIETARY PRODUCT OF USC TECHNOLOGIES, INC., A U.S. CONCRETE COMPANY

For more information, call 1-866-882-6176

CONTROLLED EVALUATIONS

All tests were conducted in a strictly controlled environment of 73° F and 50 percent RH.

Internal Relative Humidity (RH)



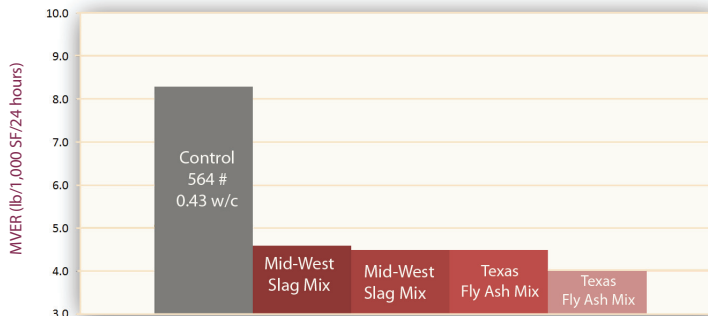
Aridus reached the target humidity level three times faster than conventional concrete.

RH is an indicator of the remaining moisture in concrete that will either be used in further hydration or emitted as water vapor.

RH is the standard for measuring moisture in flooring systems in Europe. Its use in flooring warranties is limited in the United States, but is becoming increasingly more common.



Moisture Vapor Emission Rate (MVER) Test Results at 45 Days

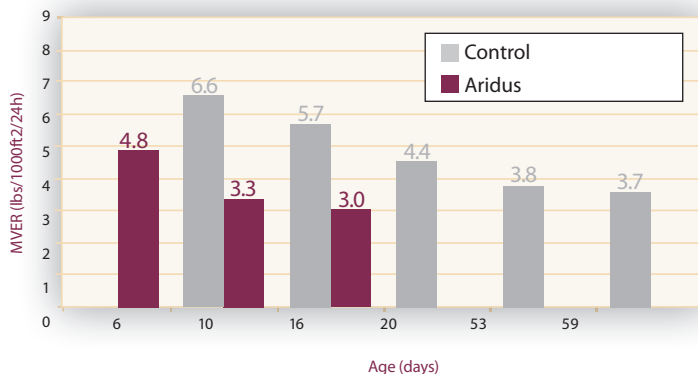


Aridus reached a flooring-safe MVER level at least five times faster than conventional concrete.

Many common flooring systems require an MVER of 5 lbs/1000 ft²/24 hrs at the time of flooring application for warranties to be valid. Under some drying conditions, conventional concrete will never reach that level.



Rewetting Effect



After a rewetting event, Aridus redries about four times faster than conventional concrete.

To test how rain would affect the MVER of concrete that had already dried, we did a side-by-side comparison. Both Aridus and conventional concrete were dried to an MVER of 3 lbs/1000 ft²/24 hrs. Then we "ponded" a quarter inch of water on each for 24 hours to simulate a heavy rain event. After the soaking period, Aridus reached previous MVER levels in just 16 days.

